

CONKLIN SINGLE-PLY MEMBRANE SYSTEM



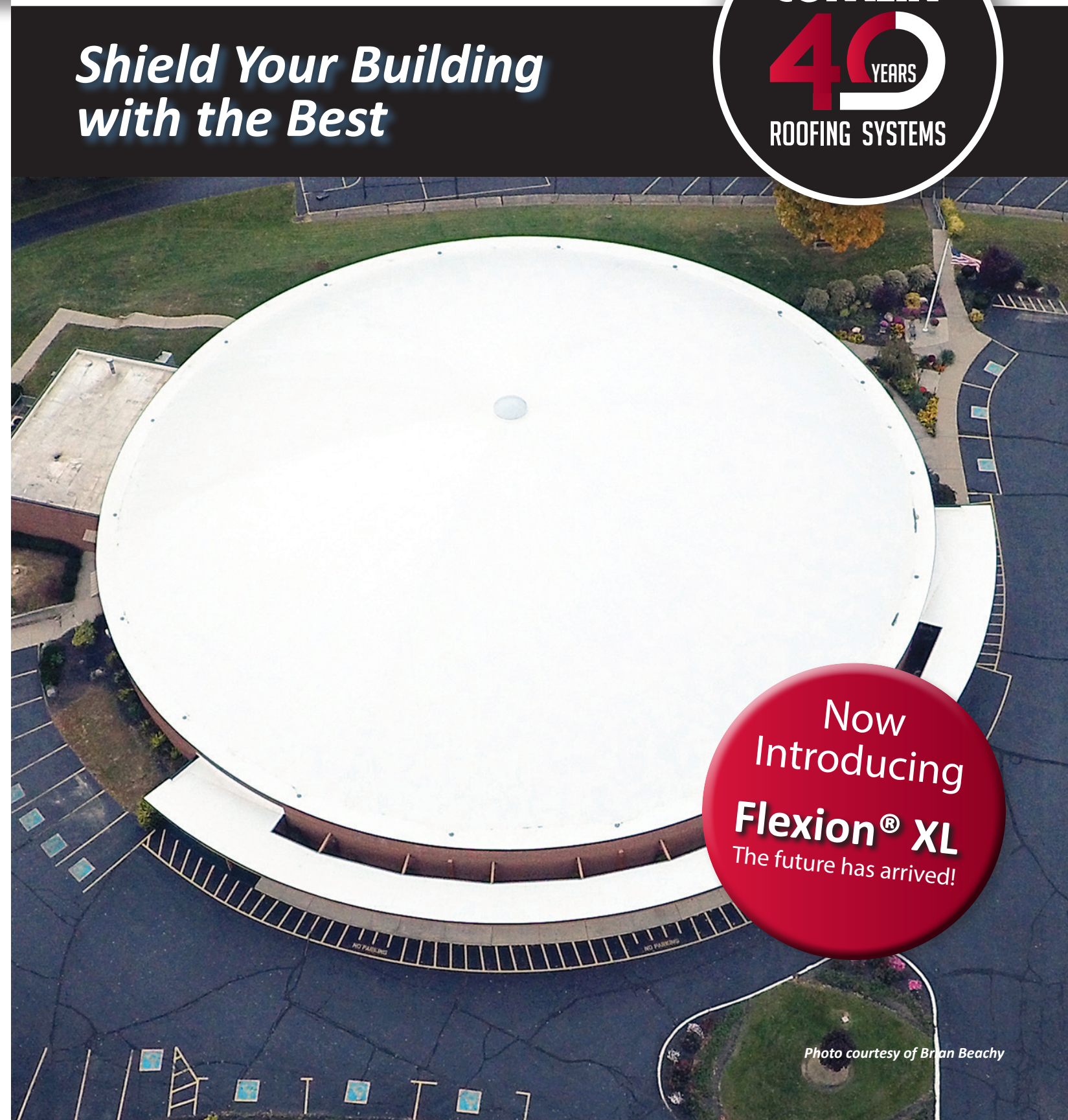
*Shield Your Building
with the Best*



Photo courtesy of Brian Beachy

“Flexion® XL is certainly our single-ply membrane of choice. The high concentration of Elvaloy® and modified compounds in the sheet make it very pliable and nice to work with compared to other PVC membranes on the market. We have installed thousands of squares of Conklin single-ply over the years with nothing but success and excellent results.”

– Brian & Jon Beachy, Ohio



Now
Introducing
Flexion® XL
The future has arrived!

Photo courtesy of Brian Beachy



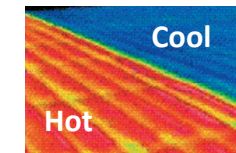
Photo courtesy of Sheldon Swartzentruber

Look forward to years of trouble-free protection, low maintenance

Conklin Roofing Systems provide leak-free protection and exceptional energy savings for years. They maintain maximum reflectivity and energy savings because their surfaces are resistant to dirt and discoloration. Annual cleaning is all that's needed to keep them white.

Reduce cooling expense by up to 30%

The average roof absorbs a large portion of the sun's ultraviolet rays as heat. Conklin's white Single-Ply Roofing System reflects 84% of the sun's heat, cooling your building and saving you as much as 30% in air conditioning costs.



Conklin's highly reflective roof systems have been providing quality solutions to the roofing market since 1977.

Flexion® XL

The next generation of high-performance, single-ply membrane roofing technology has arrived!

This Elvaloy®-modified PVC provides rugged protection from the elements. Its unique chemical formulation is naturally fire-resistant, making Flexion XL an excellent choice for both new and re-roofing applications.

- Excellent flexibility and elongation creates ease of handling and welding.
- Tremendous tear and puncture strength.
- Kevlar® selvage edge provides powerful holding strength for plates and fasteners.
- High-performance formulation ensures superior reflectivity along with chemical and dirt resistance.

What is the Single-Ply Membrane System?

A premium thermoplastic membrane system that offers outstanding reflectivity and is resistant to a broad range of chemicals, helping to extend the life of the roof. During installation, membrane rolls are overlapped and welded together to form an exceptionally durable, waterproof, energy-efficient shield that will deliver unsurpassed protection for years to come.

Advantages of Conklin's Single-Ply Membrane System:

- Stops leaks with superior waterproofing
- Provides first-rate resistance to wind and hail
- UL fire rated
- Increases energy efficiency and lowers utility expense
- Can be applied in all seasons, performs in all climates
- 20-year warranty available

Eliminate future roof tear-offs

Years from now, when it's time to renew the superior protection of your Conklin roof, our Single-Ply Membrane Coating System will do the job. Conklin's elastomeric coatings provide a new, cost-effective solution for repairing and preserving approved membranes, resulting in improved energy savings. In most cases, multiple recoats can be applied for as long as you own your building, saving you the expense of a new roof. With each recoat, our material warranty may also be extended.

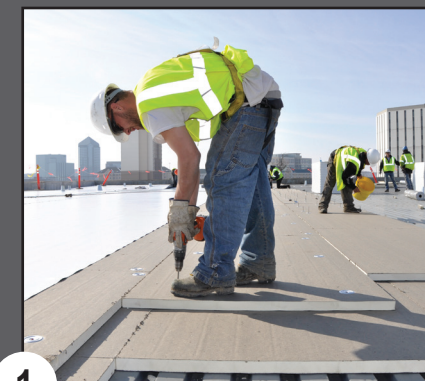
Recoup your costs

A great return on investment is another important reason to choose Conklin's Single-Ply Membrane System. Many satisfied customers discover that a Conklin roof system lowers air conditioning costs and can pay for itself during the warranty period. Federal tax rebates, tax credits and deductions may also offset your investment. In many cases, the government considers recoating a procedure that can be deducted as a maintenance cost. Check with your local utility company, tax advisor, and www.energystar.gov for additional details.

Enjoy peace of mind with our warranty program

Conklin's optional warranty program offers both limited material and manufacturer-backed labor and material warranties. The program also includes a non-prorated material warranty.

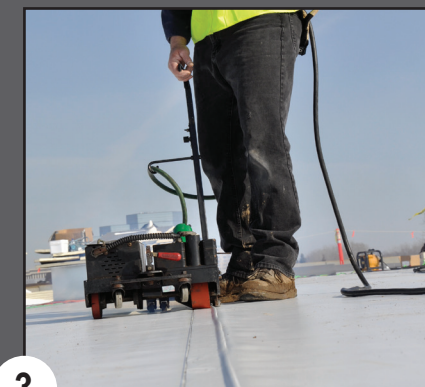
SINGLE-PLY MEMBRANE SYSTEM APPLICATION



1 Securely attach appropriate board stock.



2 Apply membrane, overlapping seams in the direction of water run-off.



3 Weld seams by hand or with robotic welder.



4 Seal free edges of membrane with urethane sealant.